

HOW TO USE THE SEWING MACHINE

1, How to replace needle

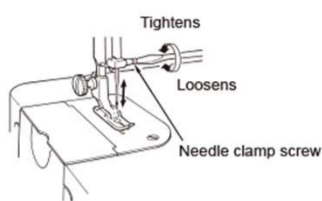
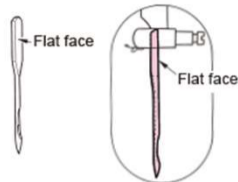


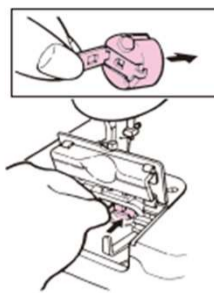
Figure as observed from the front



■ Attaching the needle

1. Turn off power.
2. Lower the presser foot.
3. Move the needle bar up to the highest position of its stroke.
4. With the flat face of the new needle facing to the right, insert the new needle into the needle bar until it can go no further. Then tighten the needle clamp screw.

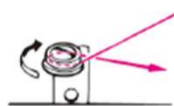
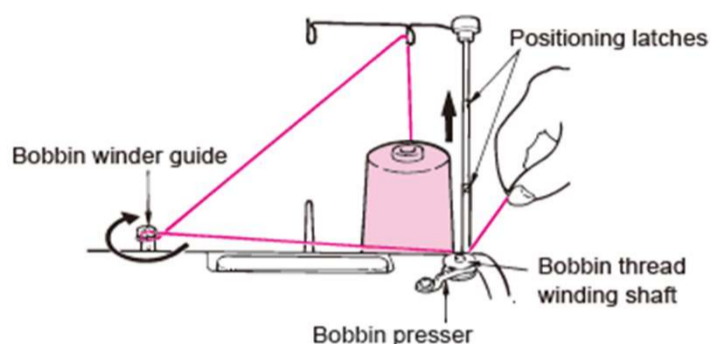
* The needle to be used is HAX1.



Set the bobbin in the sewing machine. Close the slide plate.

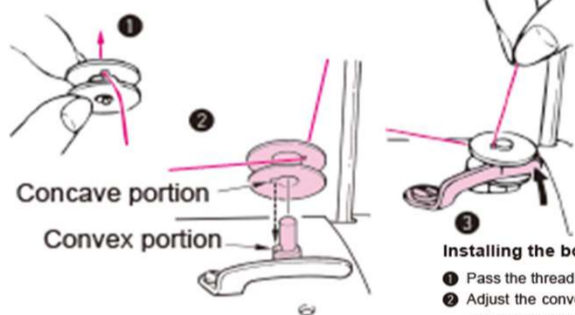
Insert the bobbin case fully into the hook, and close the bobbin case latch.

2, How to put the thread of the bottom thread



Thread the bobbin winder guide.

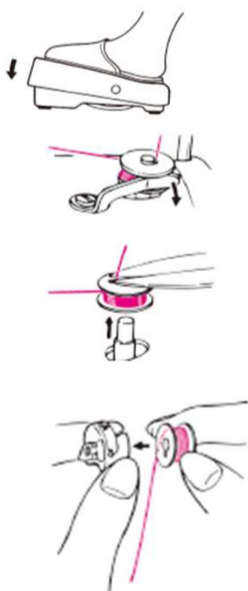
If the thread slips out of the bobbin winder guide, pass it through the hole located under the bobbin winder guide.



Installing the bobbin.

1. Pass the thread through the hole of the bobbin.
2. Adjust the convex portion of the bobbin thread winding shaft to the concave portion of the bobbin to set the bobbin.
3. Press the bobbin presser.

Start winding the bobbin.

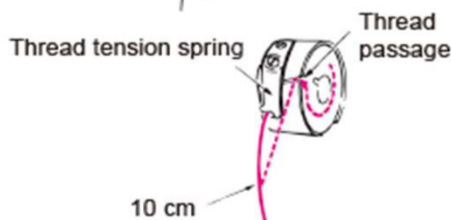


Upon completion of winding the bobbin.

Return the bobbin presser on your side. Trim the excessive thread and take out the bobbin.

Set the bobbin in the sewing machine. Close the slide plate.

Insert the bobbin case fully into the hook, and close the bobbin case latch.



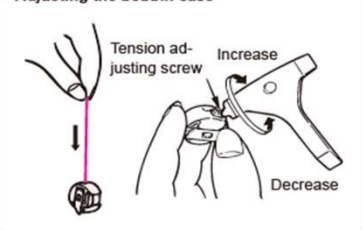
3, How to take bobbin thread tension

The standard bobbin thread tension is such that the bobbin case goes down slowly when you hold the open end of the bobbin thread and shake it as shown at right. (The count of the thread is #50.)

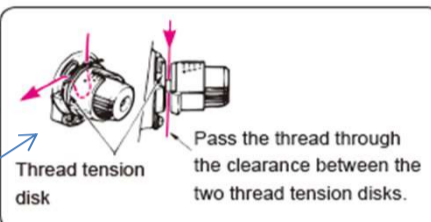
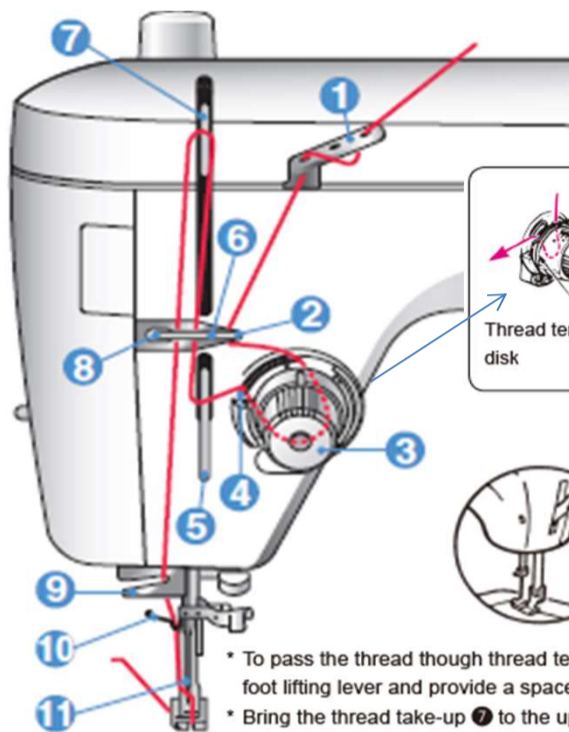
* Adjust the needle thread tension in accordance with the bobbin thread tension.

* The bobbin case is an exclusive JUKI part. Please consult the JUKI dealers when you purchase it.

Adjusting the bobbin case



4, How to put the upper thread

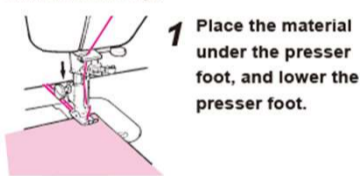


* To pass the thread through thread tension dial ⑨, firstly raise the presser foot lifting lever and provide a space between the tension disks.

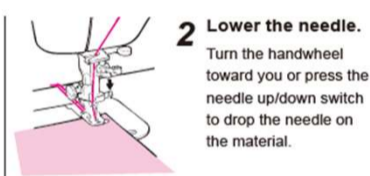
* Bring the thread take-up ⑦ to the upper end of its stroke. Then, pass the thread through it.

5, Chopstick stitch

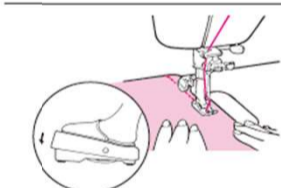
If you start sewing while the thread take-up is engaged in its ascending motion, the needle thread may slip out of the needle's eye.



- 1 Place the material under the presser foot, and lower the presser foot.



- 2 Lower the needle. Turn the handwheel toward you or press the needle up/down switch to drop the needle on the material.



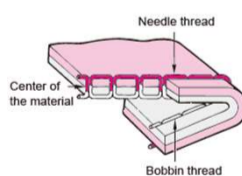
- 3 Start to run the sewing machine. Do not pull the material by hand while it is being sewn.

- 4 When the sewing is finished, stop the

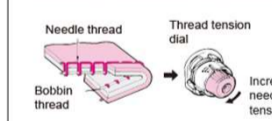
6, Upper thread tension

■ Proper thread tension

Improperly adjusted thread tension may cause puckering on materials, inferior stitches, or thread breakage.

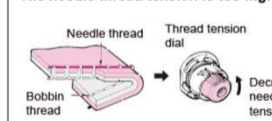


The needle thread tension is too low



Increase the needle thread tension.

The needle thread tension is too high



Decrease the needle thread tension.

7, Combination of fabrics, sewing threads, needles

■ Topstitching

With this sewing machine, you can make beautiful topstitches with stitch length up to 6 mm.

You can use various threads ranging from the standard runstitching thread to #8 topstitching thread. Change the needle according to the thread used (see the table at right).

Count of thread	Needle Size
#80-50	No.11
#60-50	No.14(11)
#50-30	No.16
#20-8	No.18

■ Tabulated relationship between material, thread and needle

	Material	Thread	Needle (HAX1)
Light-weight materials	Nylon Cupro	Synthetic thread #80-90	No.9-11
	Georgette		
	Smooth Tricot		
Medium-weight materials	Broadcloth	Cotton thread #60-80	No.11-14
	Gingham		
	Light-weight jersey	Synthetic thread #50-60	
	Synthetic cloth		
Heavy-weight materials	Flannel	Synthetic thread #50-60	No.14-18
	Wool		
	Denim	Synthetic thread #20-50	
	Canvas	Cotton thread #20-50	
	Tweed	Synthetic thread #50	
Artificial leather	Silk yam #50		
		Synthetic thread #20-30	